



Burnaby, Map 1

K. Burnaby and New Westminster

1. Evolution of the Burnaby and New Westminster electoral districts
 Immediately prior to the 1966 Angus Commission, this area had two electoral districts, Burnaby and New Westminster (see Burnaby, Map 1), with Burnaby returning two MLAs.

a. The Angus Commission (1966)

In this area, the Angus Commission gave great weight to municipal boundaries. It recommended that the New Westminster district retain its existing boundaries, but that Burnaby be divided into three single-member electoral districts of approximately equal electoral population, to be named Burnaby–Simon Fraser, Burnaby–Edmonds and Burnaby–Willingdon (see Burnaby, Map 2).

The Legislative Assembly adopted the Angus Commission’s recommendations, but changed the name of Burnaby–Simon Fraser to Burnaby North.



Burnaby, Map 2



Burnaby, Map 3

b. The Norris Commission (1975)

The Norris Commission recommended that the New Westminster electoral district remain unchanged, but that the three Burnaby electoral districts be reduced to two (Burnaby East and Burnaby West), each returning two MLAs (see Burnaby, Map 3).

The Legislative Assembly did not adopt the Norris Commission's recommendations.

c. *The Eckardt Commission (1978)*

Judge Eckardt recommended that the northeast corner of the New Westminster district be altered slightly, to bring the boundary in line with the municipal boundary. He also recommended that the three Burnaby electoral districts remain unchanged (see Burnaby, Map 4).

The Legislative Assembly adopted Judge Eckardt's recommendations.

d. *The Warren Commission (1982)*

None of Mr. Warren's recommendations affected these electoral districts.

e. *The McAdam Commission (1984)*

None of the McAdam Commission's recommendations affected these electoral districts.



Burnaby, Map 4



Burnaby, Map 5

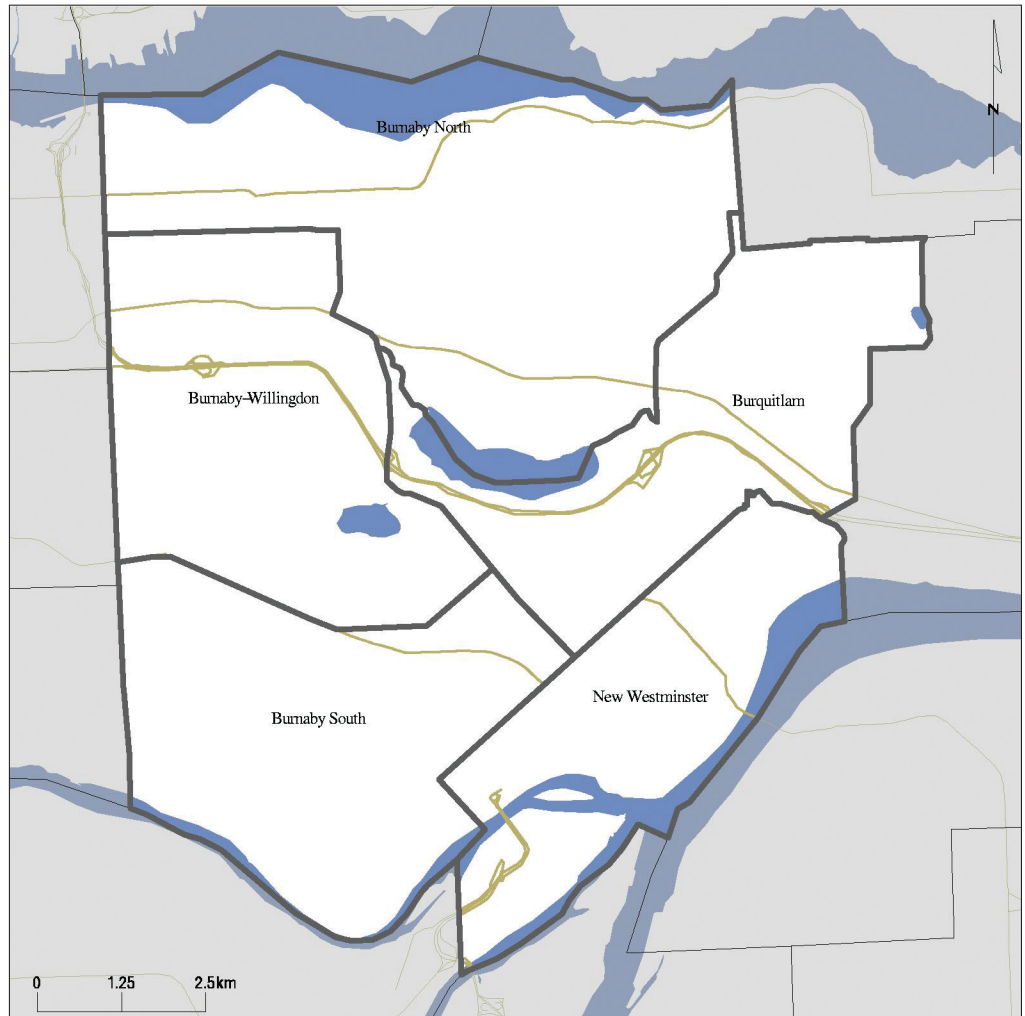
f. The Fisher Commission (1988)
 Judge Fisher recommended that the boundaries of the New Westminster electoral district remain unchanged. Due to under-representation in the Burnaby and Coquitlam areas, he recommended that a new Port Moody–Burnaby Mountain district be created (see Burnaby, Map 5), whereby the northeast quadrant of Burnaby would be joined with Port Moody.

The Legislative Assembly adopted Judge Fisher’s recommendations.

g. The Wood Commission (1999)

In its interim report, the commission recommended that the New Westminster district retain its existing boundaries (see Burnaby, Map 6), except that Annacis Island, which is within the municipality of Delta, should be transferred to Delta North. Being non-residential, the relocation of Annacis Island would have no population distribution consequences.

With respect to Burnaby, the commission recognized that population growth in Burnaby-Edmonds (plus 23 per cent) mandated redrawing of electoral boundaries. Although the commission sought, wherever possible, to propose electoral districts that were consistent with municipal boundaries, it was unable to do so in this case – the electoral districts proposed by the City of Burnaby and others produced populations too low to be justified in Burnaby, given its urban density and growth rates, which were generally close to the overall provincial rate.



Burnaby, Map 6



Burnaby, Map 7

The commission was dissatisfied with the existing Port Moody–Burnaby Mountain boundary, because it encompassed parts of three municipalities (Burnaby, Coquitlam and Port Moody). Instead, it proposed that Burnaby share an electoral district only with that portion of Coquitlam which is adjacent to Burnaby, in a district to be called Burquitlam.

In its final report, the commission made no changes to its proposed New Westminster boundaries, but significantly reworked its recommendations for the remaining four Burnaby electoral districts (see Burnaby, Map 7), accepting the City of Burnaby’s submissions that these electoral districts should be consistent with the city’s “four quadrant structure” reflected in the city’s official community plan, each with a town centre as its focus.

The Legislative Assembly adopted all of the Wood Commission’s recommendations.

2. Our analysis of the Burnaby and New Westminster electoral districts

The region we define as Burnaby–New Westminster includes the municipalities of Burnaby and New Westminster. The City of Burnaby has three electoral districts exclusively within its municipal boundaries, and shares the Burquitlam electoral district with the City of Coquitlam (see map on page 240.) The New Westminster electoral district corresponds exactly with the City of New Westminster. These electoral districts, with their deviations at the time of the 1996 census, and now, are as follows (see Table 23):

TABLE 23: CURRENT SMP ELECTORAL DISTRICTS IN BURNABY AND NEW WESTMINSTER

Electoral District	1996 deviation*	2006 deviation**
Burnaby North	+8.7%	+5.6%
Burnaby-Willingdon	+2.8%	+4.7%
Burnaby-Edmonds	+5.8%	+19.6%
Burquitlam	+8.8%	+2.5%
New Westminster	+4.7%	+12.4%

* based on 1996 census data, and assuming 79 electoral districts

** based on 2006 census data, and assuming 79 electoral districts

The New Westminster electoral district, corresponding exactly to the City of New Westminster’s municipal boundaries, has a population of 58,549. If it continues as an electoral district, it will have a deviation of plus 15.3 percent (based on 81 electoral districts). The City of Burnaby has a population of 202,799. If it were to have four electoral districts exclusively within its municipal boundaries, the average deviation would be minus 0.2 percent, based on 81 districts.

We received many submissions urging us to create four electoral districts within Burnaby, although none in favour of preserving the Burquitlam district that straddles the Burnaby/City of Coquitlam boundary. The Wood Commission reluctantly created that district in 1999 because it was not persuaded that Burnaby’s population justified four electoral districts.

If we balanced the combined population of Burnaby and New Westminster, we could create five electoral districts with populations averaging close to the provincial quotient. However, to do so would mean crossing municipal boundaries. We are persuaded that New Westminster should continue to have its own electoral district (see map of

proposed New Westminster electoral district page 242), notwithstanding a deviation of plus 15.3 percent. In our view, this is a case where community interests based on municipality should take priority over population equality.

Turning to Burnaby, it is a densely populated urban area with a rapidly growing population. There are many new condominium developments around Brentwood Town Centre, along Lougheed Highway and in the HighGate Village development. The UniverCity project on Burnaby Mountain adjacent to SFU alone will add more than 10,000 residents. Creating four electoral districts within Burnaby would result in deviations averaging minus 0.2 percent. We are satisfied that the population of Burnaby supports four electoral districts.

There are four town centers in Burnaby – Brentwood, Lougheed, Metrotown and Edmonds. We have done our best to develop electoral boundaries that respect these development areas, while at the same time trying to balance the population among all four electoral districts (see maps of proposed four Burnaby electoral districts pages 241-246).

3. Conclusion

Accordingly, we propose that there be four electoral districts in Burnaby and one electoral district in New Westminster, as follows:

TABLE 24: PROPOSED SMP ELECTORAL DISTRICTS IN BURNABY AND NEW WESTMINSTER

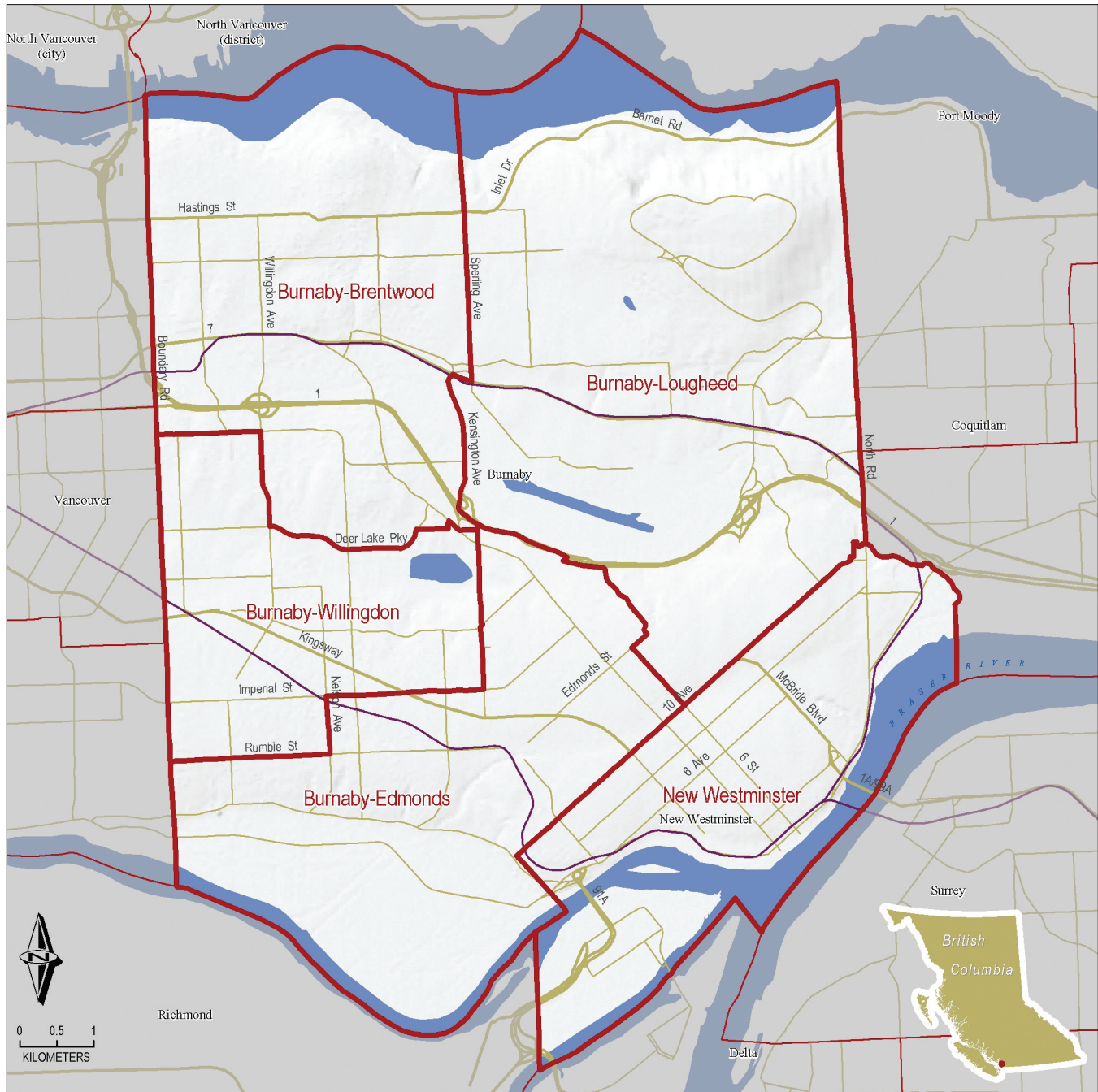
Electoral District	Sq. Km.	Population	Deviation*
Burnaby-Brentwood	24	51,274	+1%
Burnaby-Lougheed	37	50,229	-1.1%
Burnaby-Willingdon	13	50,957	+0.3%
Burnaby-Edmonds	23	50,339	-0.9%
New Westminster	18	58,549	+15.3%

* based on 81 electoral districts, with a provincial electoral quotient of 50,784

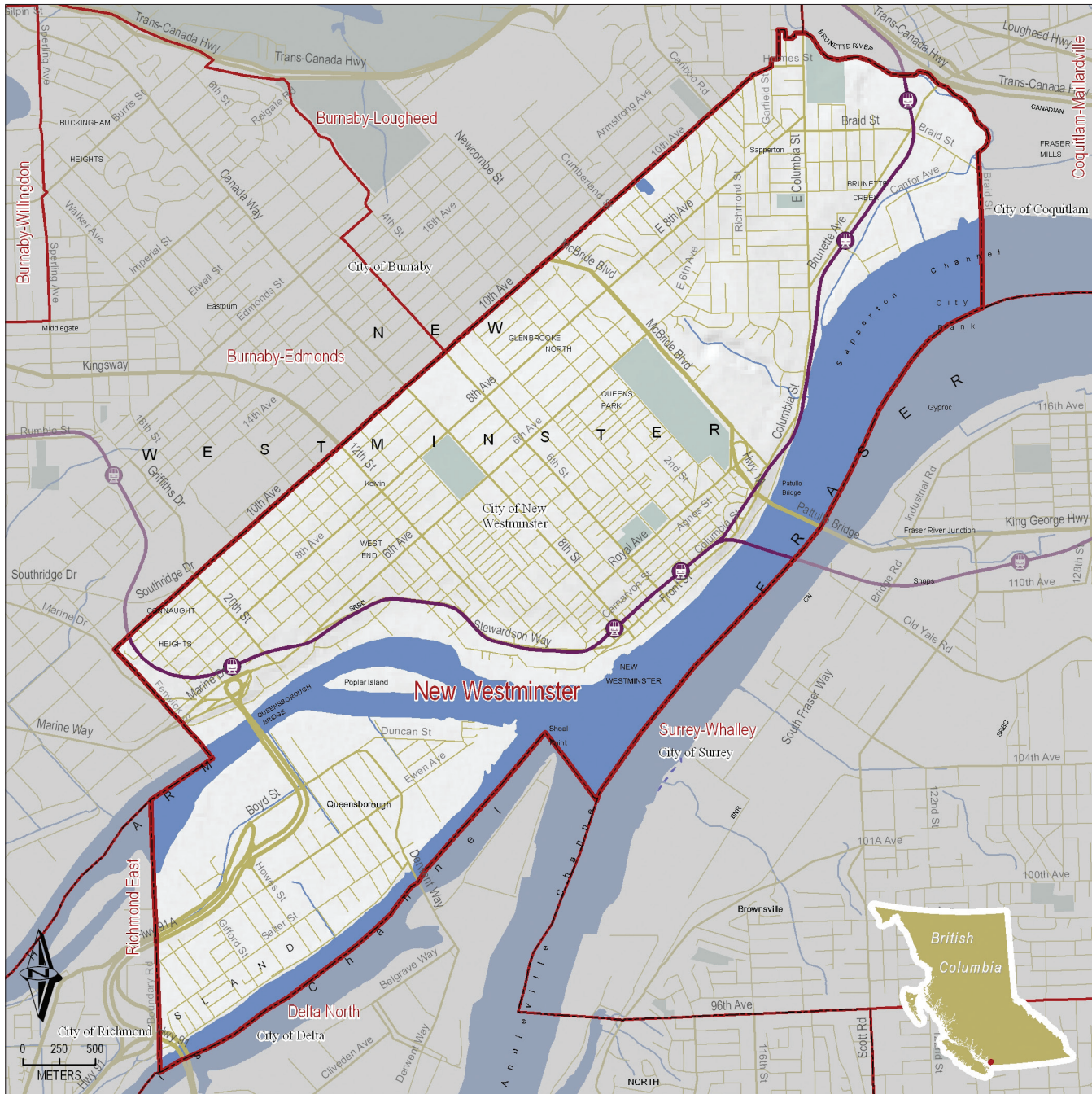
Region: Burnaby and New Westminster – Current Electoral Districts



Region: Burnaby and New Westminster – Proposed Electoral Districts



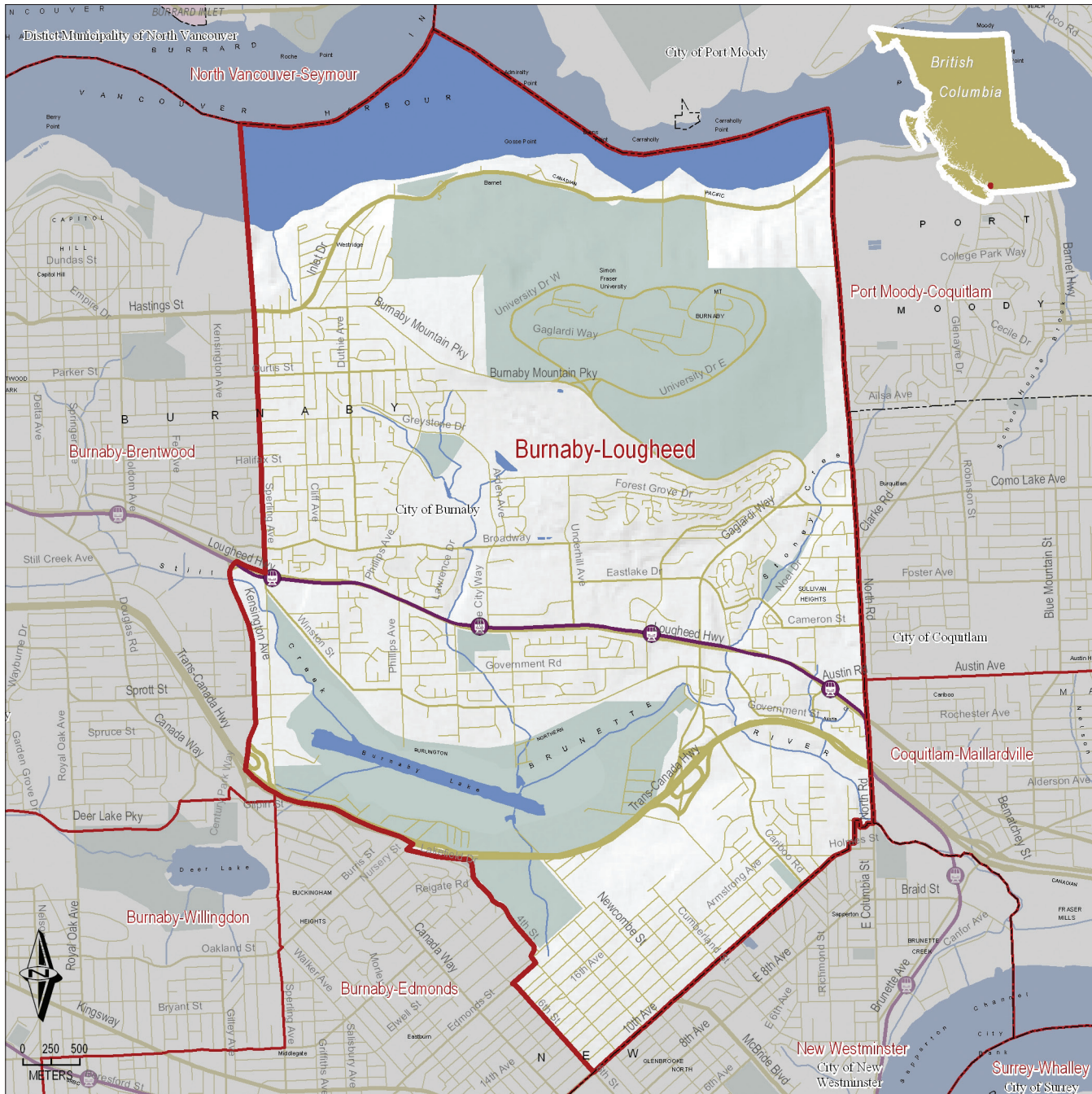
Region: Burnaby and New Westminster – Proposed New Westminster Electoral District



Region: Burnaby and New Westminster – Proposed Burnaby-Brentwood Electoral District

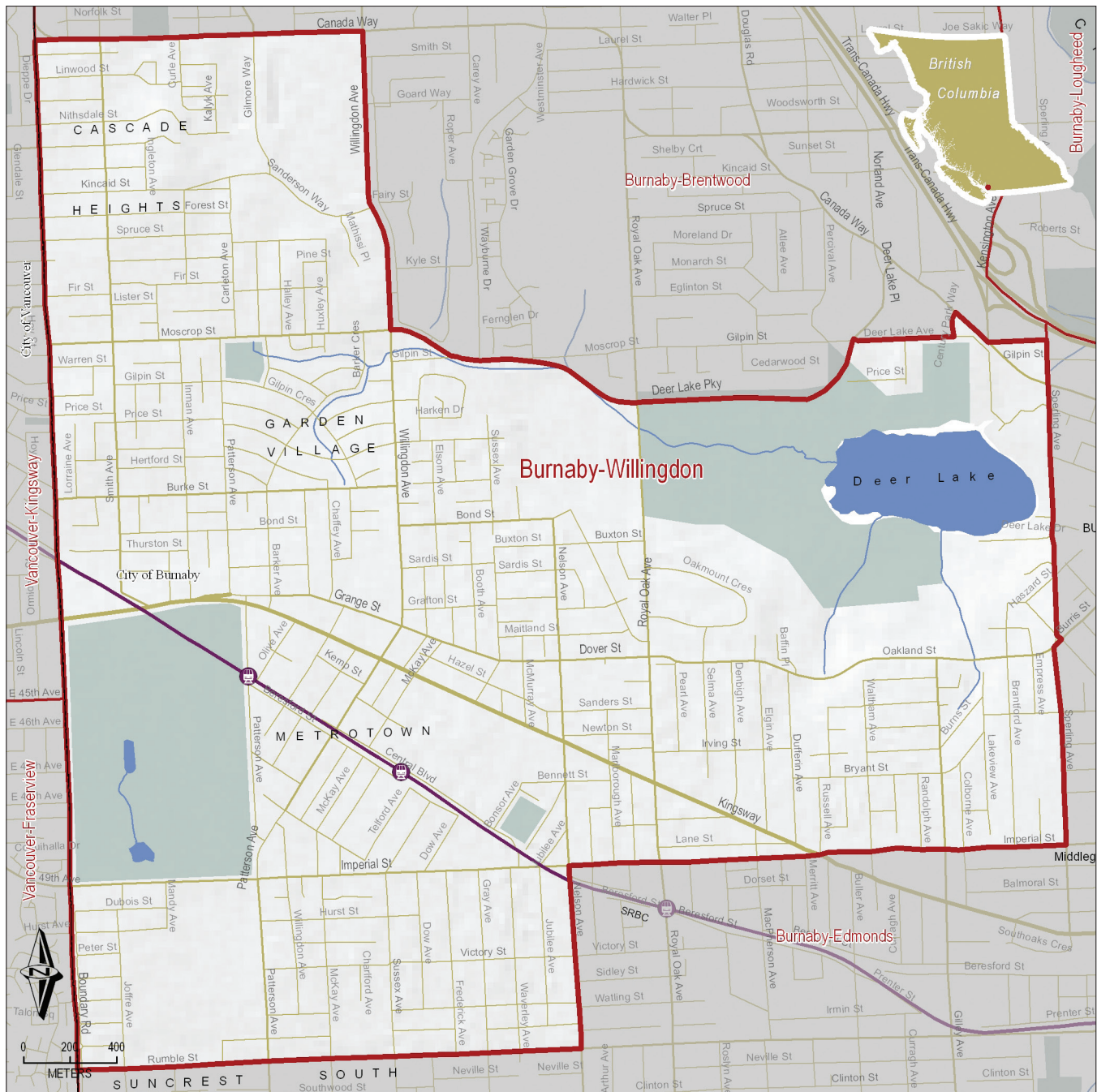


Region: Burnaby and New Westminster – Proposed Burnaby-Lougheed Electoral District

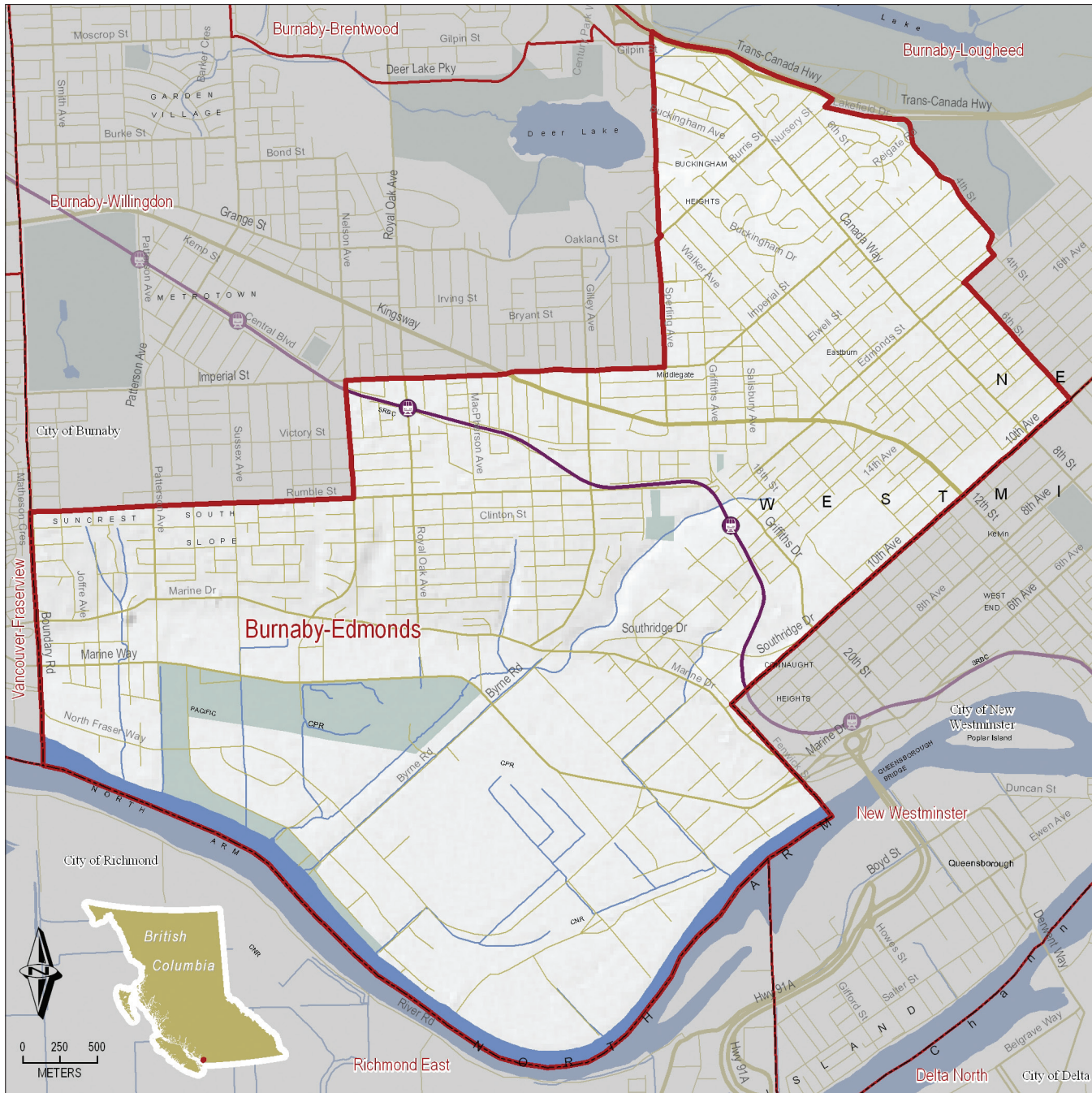


PART 9 – PROPOSED SINGLE MEMBER PLURALITY BOUNDARIES

Region: Burnaby and New Westminster – Proposed Burnaby-Willingdon Electoral District



Region: Burnaby and New Westminster – Proposed Burnaby-Edmonds Electoral District



PART 9 – PROPOSED SINGLE MEMBER PLURALITY BOUNDARIES